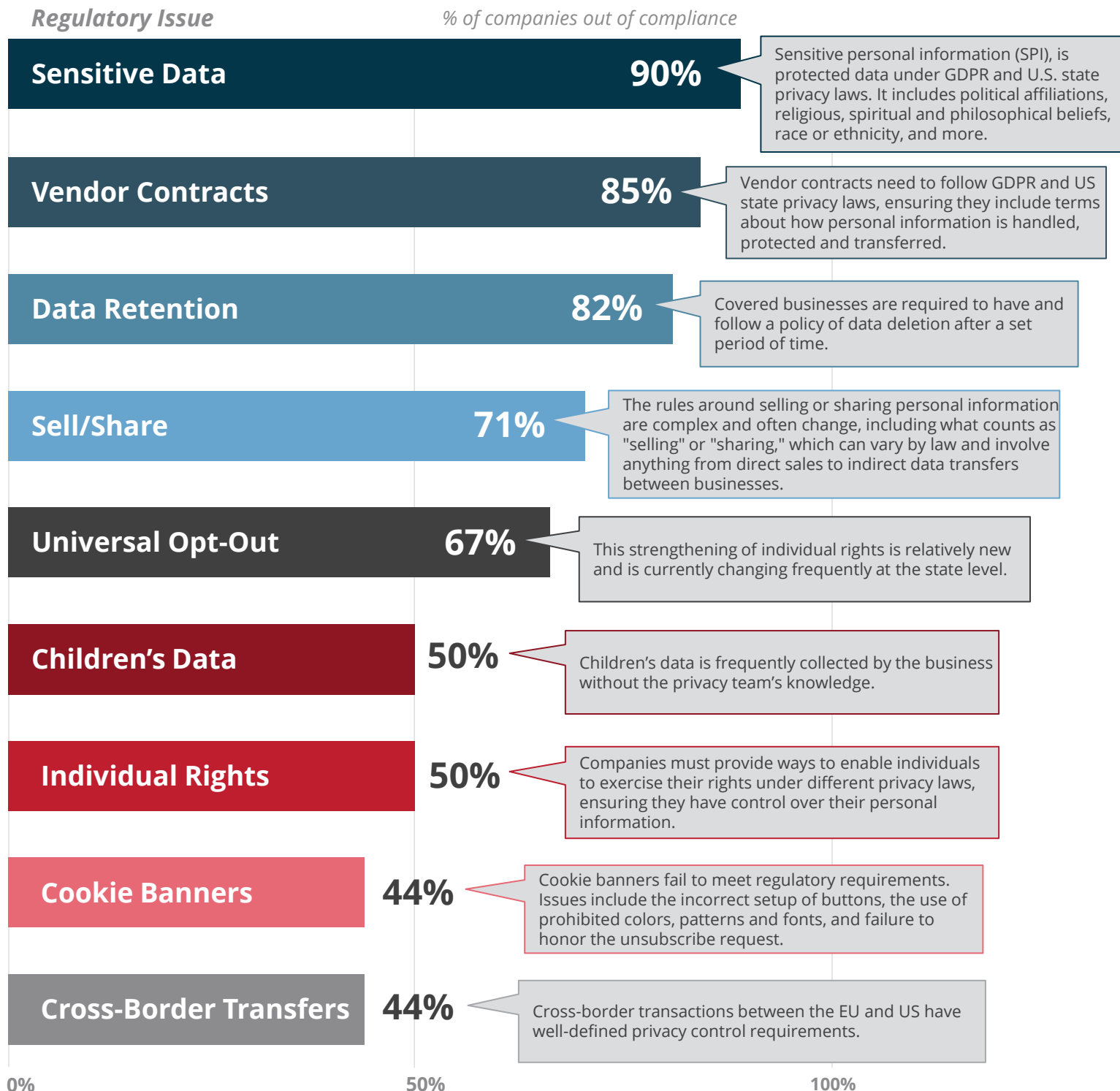


What You Don't Know Can Hurt You

Most businesses work hard to protect privacy for data they intentionally collect. But what about data that they inadvertently collect - and are still required to protect?

This report is informed by data collected by Red Clover Advisors from data inventory assessments in the last two calendar years. The following are the leading areas missed by companies when assessing their compliance obligations.



Learn more at redcloveradvisors.com/research

